



<b>Report Title:</b>	<b>Labour Cost Index Results – March 2025</b>		
<b>Report No:</b>	<b>MoSR 2025-0405</b>		
<b>Date:</b>	<b>20 May 2025</b>		
<b>To:</b>	<b>Hon Judith Collins KC, Minister for the Public Service</b>		
<b>Action Sought:</b>	<b>Share</b> the latest wage growth results for the Public Service and public sector with Ministerial Employment Relations Forum colleagues	<b>Due Date</b>	<b>22 May 2025</b>
<b>Contact Person:</b>	<b>Charlie Busby, Manager, Workforce and Employment Relations</b>		
<b>Contact No:</b>	9(2)(a) privacy		
<b>Encl:</b>	Yes – Labour Cost Index March 2025 Technical Report, and Key Points	<b>Priority:</b>	Low
<b>Security Level:</b>	<b>UNCLASSIFIED</b>		

## Executive Summary

1. Since 2009 the Public Service Commission (the Commission) has received, analysed, and reported on public sector wage growth as reported through the Labour Cost Index (LCI). The LCI is an official measure released by Statistics New Zealand (Stats NZ), but detailed analysis of wage movements within the public sector is not part of Stats NZ's public reporting.
2. This report covers wage growth for the March 2025 quarter and reflects wage changes which occurred between mid-November 2024, and mid-February 2025. Analysis includes both short-term (quarterly and annual wage growth), and long-term (using cumulative wage growth) wage growth.

### Findings

3. Wage growth this quarter is low across the public sector, except in the education sector, which delivered significant increases to teachers and principals in December 2024.
4. Key wage growth results this quarter are:
  - Public sector wage growth was 0.9 percent this quarter (up from 0.5 percent last quarter), and 4.2 percent in the year to March 2025 (down from 4.5 percent from the year to December 2024).
  - Private sector wage growth was 0.4 percent this quarter (down from 0.6 percent from last quarter), and 2.6 percent in the year to March 2025 (down from 3.0 percent in the year to December 2024).
  - Inflation, as measured by the Consumer Price Index (CPI), was 0.9 percent this quarter (up from 0.5 percent from last quarter), and 2.5 percent in the year to March 2025 (up from 2.2 percent in the year to December 2024).

**UNCLASSIFIED**

- Annual wage growth across all monitored sub-sectors, except for the Public Service, exceeded the 2.5 percent inflation figure for the year to March 2025. Refer table 1 below.
5. Data for the June 2025 quarter will be available in August 2025. We anticipate public sector quarterly wage growth will be low, and annual wage growth will continue to fall.
  6. Consistent with our normal practice, technical findings and analysis (enclosed) will be published on the Commission's website, as will key points to enable transparent access to headline figures and data for the public. Further analysis, including that regarding unadjusted wage growth, can be found in the technical report.

### **Recommended Action**

---

We recommend that you:

- a **Note** the latest wage movements in the public sector.
- b **Note** that technical analysis of the March 2025 quarter Labour Cost Index, and key points summarising these results for the public, will be published on the website of the Commission and will be proactively shared with Public Service employment relations professionals.
- c **Agree** to share the paper with the Ministers of the Ministerial Employment Relations Forum.  
*Agree/disagree.*
- d **Agree** that the Commission release this briefing in full once it has been considered by you.  
*Agree/disagree.*
- e **Note** that we anticipate low public sector wage growth for June 2025.

Hon Judith Collins KC  
**Minister for the Public Service**

## Purpose of Report

7. Each quarter we brief the Minister for the Public Service and the public sector's employment relations community on the latest wage movements from the Labour Cost Index (LCI) results released by Stats NZ, with a special focus on the public sector.
8. Analysis is prepared by the Employment Relations team at the Commission to ensure public sector employment relations specialists have access to information on pay changes, and to ensure the public has access to this information in an easily digestible format. This is not analysis prepared or published by Stats NZ.
9. Established practice is for the Commission to publish technical findings as soon as possible after data is received. Reporting for this quarter is scheduled for Thursday 22 May.
10. The report covers adjusted wage growth, controlling for the quality and quantity of labour. In this regard it is an equivalent measure for wage growth as the Consumer Price Index is for price growth.
11. The report focuses on the public sector and its subgroups (also referred to as sub-sectors), which include the Public Service (departments and departmental agencies), health sector, education sector, and other central government (which includes NZ Police, NZ Defence Force, and other Crown entities).

## Analysis

### *Adjusted wage growth*

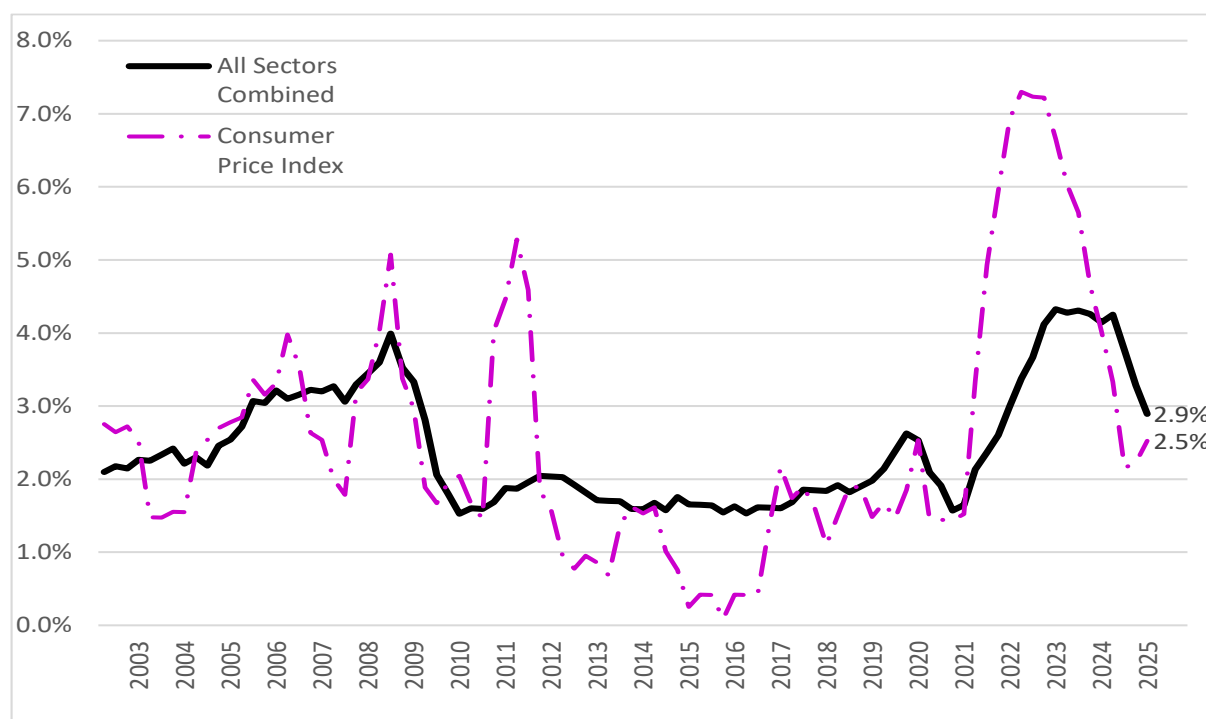
12. Key data for March 2025 is summarised in Table 1.

**Table 1: quarterly, annual, and cumulative wage growth data for select sectors and sub-sectors**

Labour Cost Index results for the March 2025 quarter			Cumulative wage growth since:	
	Quarterly	Annual	March 2018	June 2001
All Sectors Combined	0.5%	2.9%	22.4%	76.9%
Private Sector	0.4%	2.6%	21.6%	75.2%
Public Sector	0.9%	4.2%	26.2%	85.0%
Public Service	0.0%	2.4%	21.4%	66.5%
Health Sector	0.4%	5.2%	38.9%	110.6%
Education Sector	2.4%	5.1%	24.8%	88.7%
Other Central Govt.	0.4%	4.2%	21.6%	67.2%
Local Govt.	0.1%	3.2%	23.5%	84.0%
Inflation	0.9%	2.5%	28.5%	81.8%

13. Quarterly wage growth across all sectors combined was 0.5 percent in March 2025, down from 0.6 percent in December 2024, compared to a near-record-high 1.2 percent in the June 2024 quarter.
14. Annual wage growth was 2.9 percent in the year to March 2025, down from 3.3 percent in December 2024, and a record high 4.3 percent in June 2024. While wage growth has now fallen below 3.0 percent, the first time it has done so since March 2022, it is still notably above the long-term average, as shown in Figure 1 below.

**Figure 1: annual wage growth for all sectors combined, and inflation (as measured by the CPI) since June 2002**



15. Key points from the latest data include:

- Quarterly wage growth of 0.4 percent in the private sector is the lowest quarterly growth for that sector since March 2021.
- Annual wage growth across all monitored sectors and sector sub-groups, except for the Public Service, is higher than inflation in the year to March 2025. However, in the medium term, since March 2018, cumulative inflation exceeds cumulative wage growth in all sectors and sector sub-groups, except the health sector.
- Education wage growth at 2.4 percent for the quarter is the third highest single-quarter wage growth we have seen for this sector since 2001. This is the result of increases agreed through collective bargaining for teachers and principals in primary schools and secondary schools, that apply from December 2024.
- Annual wage growth across both education and health sectors (5.1 percent, and 5.2 percent respectively) remains high compared to historic rates of wage growth.

## Future Wage Growth

16. Data for the June 2025 quarter is due to be released Wednesday 6 August 2025, following a survey period of mid-May 2025. You can expect our report summarising these results in August 2025.
17. We anticipate low quarterly wage growth across the public sector in June 2025, with different results for quarterly and annual wage growth.
- **Quarterly wage growth for June 2025 is likely to be below average:** Few increases have been delivered to staff between February 2025 and May 2025.

- **Annual wage growth for the year to June 2025 will be low-to-average for most sector groups:** June 2024 saw near record high quarterly wage growth of 1.3 percent in the Public Service, 2.1 percent in the education sector, and 3.6 percent in the health sector. This quarterly growth will no longer affect annual growth from June 2025, and so a return to low averaged annual wage growth is expected.
18. In addition, the impact of the new Government Workforce Policy Statement and fiscal considerations will continue to be felt in coming quarters as new remuneration decisions are made in public sector agencies. The impact of fiscally constrained remuneration decisions will be seen in the September 2025 quarter when increases have typically been applied from 1 July 2025.

# Labour Cost Index Technical Report – March 2025



**Te Kawa Mataaho**  
Public Service Commission

## Purpose

Each quarter the Public Service Commission (the Commission) reports on the latest Labour Cost Index (LCI) results, with a special focus on the public sector. The LCI measures changes in salary and wage rates in the labour market for the same quality and quantity of labour. The Commission uses the LCI to monitor, oversee, and report on wage movements in the public sector.

This material has been prepared by the Commission for use by public sector employment relations professionals, from data provided by Statistics New Zealand (Stats NZ), and ensures transparency of public sector wage growth for the public.

You can find additional information and data relating to this quarter's index on the Commission's Employment Relations website: [Here](#), and the Stats NZ website here: Labour market statistics: [March 2025 quarter](#).

## Summary

- 1 This report summarises movements in the LCI for the March 2025 quarter ("this quarter") for public sector employment relations professionals, and other key stakeholders. Quarterly wage movements reflect increases applied between mid-November 2024 and mid-February 2025, while annual wage movements reflect increases applied between mid-February 2024 and mid-February 2025.
- 2 Across **all sectors combined**, wages grew 0.5 percent this quarter (down from 0.6 percent from the December 2024 quarter ("last quarter")) and 2.9 percent in the year to March 2025 (down from 3.3 percent in the year to December 2024).
- 3 In the **public sector**, wage growth this quarter was 0.9 percent (up from 0.5 percent last quarter) and 4.2 percent for the year to March 2025 (down from 4.5 percent from the year to December 2024).
- 4 In the **private sector**, wage growth this quarter was 0.4 percent (down from 0.6 percent from last quarter) and 2.6 percent for the year to March 2025 (down from 3.0 percent in the year to December 2024).
- 5 In the **Public Service**, wage growth for this quarter was 0.0 percent (down from 0.3 percent last quarter) and 2.4 percent for the year to March 2025 (down from 3.6 percent from the year to December 2024).
- 6 These results are in the context of annual consumer inflation, as measured by the Consumer Price Index, of 2.5 percent for the year to March 2025 (up from 2.2 percent in the year to December 2024). Quarterly inflation was 0.9 percent in March 2025 (up from 0.5 percent last quarter).
- 7 Public sector wages have increased 26.2 percent since 2018, compared to private sector wage growth of 21.6 percent and inflation of 28.5 percent over the same period. Public Service cumulative wage growth is 21.4 percent since 2018.



## Public Service Commission technical report on Labour Cost Index movements: March 2025 quarter

- 8 Stats NZ publishes official labour market statistics quarterly, providing a picture of the New Zealand labour market. These statistics include measures of unemployment and employment, demand for labour, and changes in wages and salaries. Changes in wages and salaries are measured using the Labour Cost Index (LCI).
- 9 The Commission has a role in monitoring and overseeing wage movements across the public sector. Analysis of sector and sector-subgroup wage movements using the LCI supports this role, providing regular data on the impact of remuneration decisions being made across the system, for example through collective bargaining. This is not analysis that Stats NZ produces.
- 10 Wage growth is reported by sector:
  - 10.1 Unless otherwise stated, wage growth refers to increases of labour costs across the economy, sometimes referred to as wage growth across “all sectors combined.” This is comprised of staff employed in both the “public sector,” and the “private sector.”
  - 10.2 The “public sector” is comprised of “central government” and “local government.”
  - 10.3 “Central government” is comprised of the “Public Service” (departments and departmental agencies), the “health sector” (staff employed by Health New Zealand), “education sector” (staff employed by public primary and secondary schools), and “other central government” sector.
  - 10.4 “Other central government” includes other public sector employers not in the Public Service, health, or education. It includes most Crown agents and Crown entities, as well as New Zealand Police, and New Zealand Defence Force, but excludes state-owned enterprises.

### Public and private sector movement in salary and wage rates

#### *Public and private sectors*

- 11 In late 2022, Cabinet agreed that work should proceed with unions on a “Public Sector Pay Adjustment” (the Pay Adjustment). This work programme has now concluded but its effects continue to be seen in annual wage growth results<sup>1</sup>. It is likely that the September 2025 quarter will be the first quarter unaffected by the Pay Adjustment since March 2023.
- 12 We note that a result of the Pay Adjustment is a grouping of public sector collective agreement expiry dates in late 2024, and early 2025. Because bargaining is ongoing, or upcoming, wage increases that would be delivered through settlement of these collective agreements have not had an impact on the index. Modest wage growth in the March 2025 quarter for much of the public sector is a consequence of this grouping of collective agreement expiry dates, although we also note wage growth is typically lower in March quarters due to seasonality, and few increases typically occurring between November and February.

<sup>1</sup> The Pay Adjustment delivered two increases across two years, either occurring from 1 December 2022 (year one) and 1 December 2023 (year two), or 3 April 2023 (year one) and 3 April 2024 (year two).



# Labour Cost Index Technical Report – March 2025



**Te Kawa Mataaho**  
Public Service Commission

- 13 A Government Workforce Policy Statement on Employment Relations in the Public Sector has been influencing remuneration decisions across the public sector since mid-2024. The impact of the Policy Statement has been limited this quarter due to fewer remuneration decisions being actioned across the sector in the second half of the year, although the number of remuneration decisions being made may have been influenced by this policy statement. The impact of the expectations will become clearer in 2025. Where decisions have been made, these have generally not been accompanied with immediate uplifts in base pay rates.

## Quarterly change

- 14 Wage growth was 0.5 percent this quarter (down from 0.6 percent in December 2024). In the public sector, wages grew 0.9 percent this quarter (up from 0.5 percent last quarter), while in the private sector, wages grew 0.4 percent this quarter (down from 0.6 percent last quarter). Increased wage growth in the public sector is driven by increases in the education sector, refer *public sector and public sector sub-groups*, below.
- 15 Wage growth typically exhibits seasonality effects, with higher increases for the public sector typical in September and December compared to March and June. There is less seasonality in the private sector. This seasonality has been disrupted in recent quarters, due to the timing of wage increases delivered through pay equity corrections, and the Pay Adjustment. Quarterly wage growth for March 2025 is average, or below average, for a March quarter across the economy, in the private sector, and for most of the public sector.
- 16 Since September 2009, wage growth averages 0.5 percent in a March quarter (0.5 percent this quarter), public sector wage growth averages 0.5 percent in March (0.9 percent this quarter), and private sector wage growth averages 0.4 percent in March (0.4 percent this quarter). We may be seeing a return to pre-Pay Adjustment seasonality patterns, and will continue to monitor this.

## Annual Change

- 17 In the year to March 2025, wages grew 2.9 percent (down from 3.3 percent in the year to December 2024). Over the same period wages grew 4.2 percent for the public sector (down from 4.5 percent for the year to December 2024) and 2.6 percent for the private sector (down from 3.0 percent for the year to December 2024).
- 18 Figure 1 below compares annual wage movements for the public and private sectors since the March 2002 quarter.
- 19 We note that:
- 19.1 The effect of the Global Financial Crisis on wage growth was first seen in the December 2008 quarter.
  - 19.2 COVID-19 restrictions, followed by the effects of tight labour market conditions, including low unemployment and border restrictions first eased, and then pressured, wage growth between 2020 and 2022.
  - 19.3 The impact of pay corrections since 2022, and the Pay Adjustment in 2023 and 2024 is seen in significant public sector wage growth over that time.

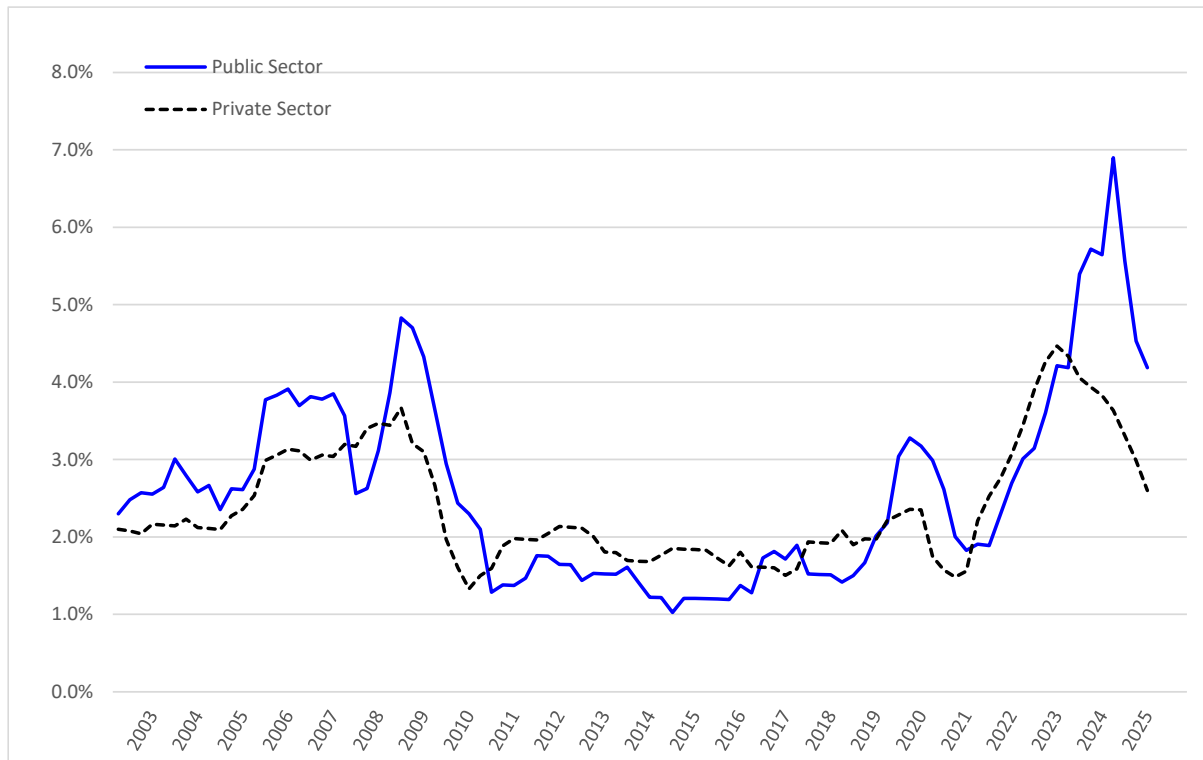


# Labour Cost Index Technical Report – March 2025



**Te Kawa Mataaho**  
Public Service Commission

**Figure 1: public and private sector annual movement in salary and wage rates (percentage change from same quarter of previous year), 2002-2025**



20 Figure 1 illustrates that public sector wage growth is generally slower to react to market conditions than the private sector, being slower to adjust down in reaction to negative market movements or up in reaction to tight labour market conditions. One reason for this is the relative prominence of collective bargaining in the public sector, with settlements that typically include scheduled pay increases over the life of a multi-year agreement. We can see this clearly in recent years:

- 20.1 Tight labour market conditions and increasing inflation throughout 2021 and 2022 pressured wage growth across the economy. Private sector responded quickly, with wage growth increasing throughout 2021 and 2022. Public sector responded more slowly, with wage growth not increasing until late 2021 and into 2022.
- 20.2 Economic conditions, including high consumer inflation, tight labour market conditions, and private sector wage growth, collectively played some part in 2022 decisions to implement a public sector pay adjustment. This was implemented from early 2023. However, just as this was beginning to be implemented, economic conditions changed.
- 20.3 Inflation, which had remained relatively steady at around 7.2 percent for much of 2022, began to fall in 2023, and private sector wage growth which had increased steadily in the previous two years also began to decline. Conversely, public sector employers had only just begun to implement the pay adjustment in March 2023, locking in two years of wage increases, mostly through collective agreements expiring in December 2024 or

# Labour Cost Index Technical Report – March 2025



**Te Kawa Mataaho**  
Public Service Commission

April 2025. The Pay Adjustment is still affecting wage growth in March 2025, two years after private sector wage growth peaked.

## Public sector and public sector sub-groups

- 21 Bargaining for new collective agreements has not driven wage growth this quarter, however, increases in previously settled agreements delivered significantly affected wage growth in the education sector. We estimate over 70,000 teachers and principals received increases this quarter. This does not include staff who may have received wage increases due to contractually required progression. Progression is adjusted out of the LCI, but is reflected in the unadjusted LCI index (refer *unadjusted wage growth* below).
  - 21.1 Central government wages grew 1.1 percent this quarter (up from 0.4 percent from last quarter), and 4.3 percent in the year to March 2025 (down from 4.6 percent in the year to December 2024). This includes increases in the health sector, education sector, Public Service, and the other central government group (excluding state-owned enterprises), and excludes Local Government.
  - 21.2 In the Public Service, wage growth was flat this quarter, changing 0.0 percent (down from 0.3 percent in December 2024). In the year to March 2025, Public Service wage increases were 2.4 percent (down from 3.6 percent in the year to December 2024, and sector-high 5.4 percent annual wage growth in the year to June 2024). This is the sixth instance on record of nil quarterly wage growth in the Public Service<sup>2</sup>.
  - 21.3 Education sector wages grew 2.4 percent this quarter (up from 0.1 percent last quarter), and 5.1 percent in the year to March 2025 (up from 3.9 percent in the year to December 2024). Quarterly wage growth of 2.4 percent is the third highest result for this sector on record.
  - 21.4 Health sector wages grew 0.4 percent this quarter (down from 0.5 percent last quarter). In the year to March 2025, annual wage growth was 5.2 percent (down from 7.1 percent last quarter). While health sector wage growth continues to fall, since the peak of 10.0 percent in June 2024, it remains above average, and still leads annual wage growth across the public sector.
  - 21.5 Other central government group wages grew 0.4 percent this quarter (down from 0.5 percent last quarter), and 4.2 percent in the year to March 2025 (up from 4.1 percent in the year to December 2024). This group includes the New Zealand Police, New Zealand Defence Force, Accident Compensation Corporation, and other Crown agents not elsewhere included.

## Local government

- 22 Local government wages grew by 0.1 percent this quarter (down from 1.8 percent last quarter). Annual wage growth in the year to March 2025 was 3.2 percent (down from 3.7 percent in the year to December 2024). Local government tends to have highly seasonal wage growth relative to other sectors with quarterly wage growth averaging 1.2 percent since 2009 in a December quarter, while wage growth in other quarters average between 0.3 and 0.7 percent over the same period.

<sup>2</sup> The previous five instances were June 2007, March 2009, June 2010, June 2012, and June 2013.

# Labour Cost Index Technical Report – March 2025



**Te Kawa Mataaho**  
Public Service Commission

## A note on pay equity

- 23 Wage growth delivered as a result of pay equity outcomes show in the LCI. This wage growth affects pay and workforce costs, but should be considered as a pay correction (due to sex-based undervaluation) rather than a negotiated pay increase.
- 24 Normally, employers may look to the LCI to compare how wages are growing elsewhere in the economy and this may influence their own remuneration decisions. However, where pay corrections have influenced the index, particularly the health and education sectors, caution should be exercised. Delivering a negotiated pay increase to “keep up” with a pay growth in another sector risks undermining pay corrections that have influenced that sector’s wage growth. This could result in new sex-based undervaluation emerging, and in turn could have cost for the employer, and government.

## Cumulative wage growth and inflation

- 25 Consumer inflation, as measured by the Consumer Price Index, was 0.9 percent in the March 2025 quarter (up from 0.5 percent last quarter). Annual inflation was 2.5 percent in the year to March 2025, up from 2.2 percent in the year to December 2024. Annual inflation continues to lag annual wage growth across all monitored sectors and sector sub-groups.
- 26 Data above reflects short term changes in wage growth, changes over the last quarter, year, or two years. Medium- and long-term wage growth is better measured through cumulative change.
- 27 In considering the below data, it is important to note that wage growth is not the same as wage rates. Different sectors will face different labour market conditions and pressures, each of which may influence wage growth in that sector differently. For example, changes to the minimum wage affect private sector wage growth more than Public Service wage growth.

## Medium-term cumulative wage growth

- 28 Cumulatively, wages have grown 22.4 percent since March 2018, growing 26.2 percent across the public sector, and 21.6 percent across the private sector in that time. For comparison, cumulative inflation was 28.5 percent since 2018.
- 29 Within the public sector, cumulative wage growth varies between 21.4 percent for the Public Service and 38.9 percent for the health sector, although the health sector is an outlier in this regard, refer figure 2 below.
- 30 Noting that public sector wage growth has been impacted by significant pay equity outcomes in the health sector, gaps in cumulative wage growth since March 2018 include:
  - 30.1 Public Service wage growth is 4.8 percentage points **below** public sector wage growth (3.7 percentage points below when measured last quarter).
  - 30.2 Health sector wage growth is 12.6 percentage points **above** public sector wage growth (13.2 percentage points above when measured last quarter).
  - 30.3 Education sector wage growth is 1.4 percentage points **below** public sector wage growth (3.3 percentage points below when measured last quarter).
  - 30.4 Private sector wage growth is 4.7 percentage points **below** public sector wage growth (4.0 percentage points below when measured last quarter).

# Labour Cost Index Technical Report – March 2025

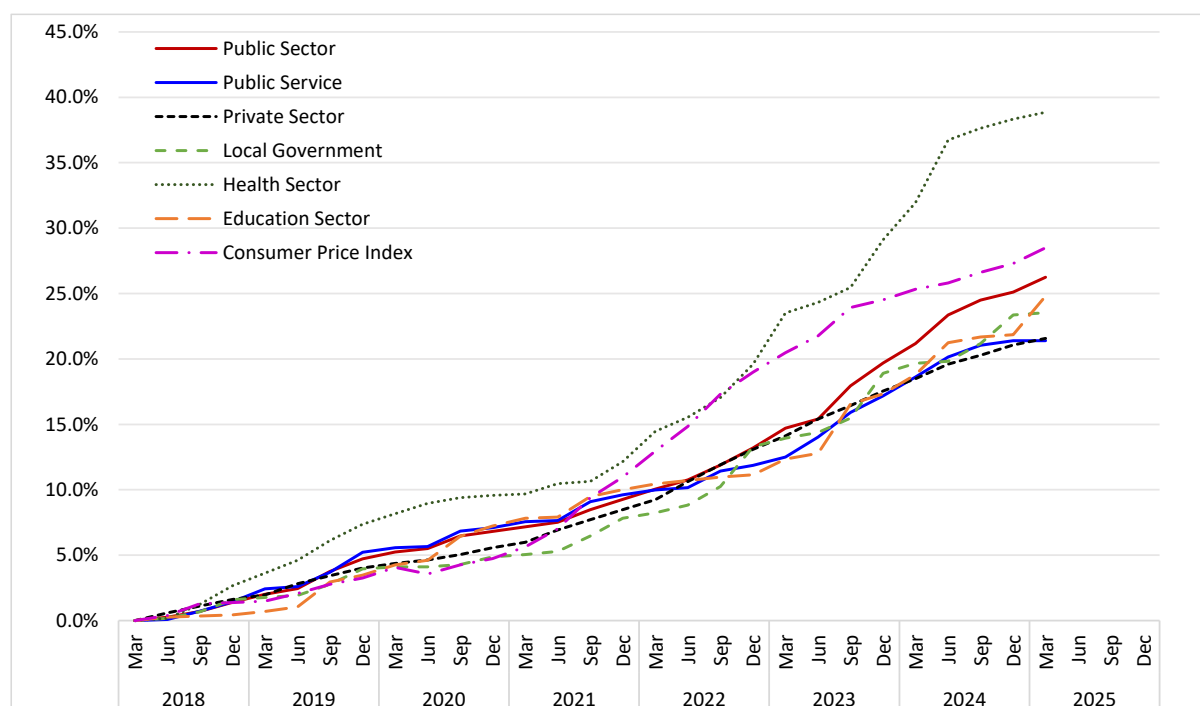


**Te Kawa Mataaho**  
Public Service Commission

30.5 Inflation, as measured by the Consumer Price Index, is 2.2 percentage points **above** public sector wage growth (2.2 percentage points above when measured last quarter).

31 Figure 2, below, shows the trend in wage movements of selected sectors and sector sub-groups since 2018, on a cumulative basis.

**Figure 2: Labour Cost Index – wage movements by sector and inflation (cumulative percentage change since March 2018)**



## Long-term cumulative wage growth

32 Where the medium-term wage growth trend is one of relatively consistent wage growth across much of the public sector and the private sector, the longer-term wage growth trend (since June 2001) shows more variability.

33 Cumulatively, wages have grown 76.9 percent since 2001, growing 85.0 percent across the public sector, and 75.2 percent across the private sector in that time. For comparison, cumulative inflation was 81.8 percent since 2001.

34 Cumulative wage growth for the health and education sectors generally trended together between 2001 and 2020. The recent deviation shows the differences in the timing of collective bargaining around 2018 and 2019, and the impacts of subsequent settlements in the sector.

35 Public Service cumulative wage growth is relatively low compared to other sectors. This may be due to higher average wages in the Public Service, or the prevalence of progression and other increases which are adjusted out of the LCI. Refer to *unadjusted wage growth* below for further context.

36 Figure 3 below shows the long-term trend (since 2001) in cumulative wage movements of selected sectors and sector sub-groups.

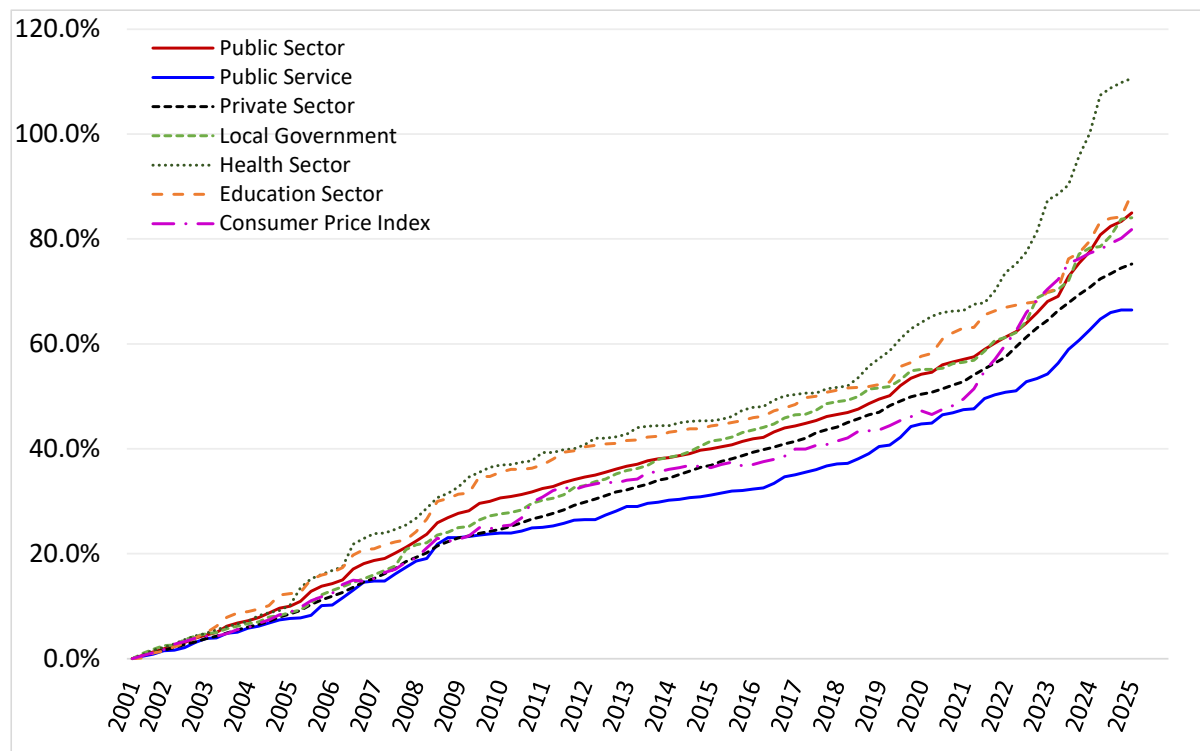


# Labour Cost Index Technical Report – March 2025



**Te Kawa Mataaho**  
Public Service Commission

**Figure 3: Labour Cost Index – wage movements by sector and inflation (cumulative percentage change since June 2001)**



## Unadjusted wage growth

- 37 The LCI's headline series are adjusted to remove the effect of any changes to the quality or quantity of labour. A secondary index, the unadjusted LCI, is also available which allows labour cost increases resulting from changes to the quality of labour.
- 38 The unadjusted LCI tends to increase at a higher rate than wage cost inflation, since it also includes factors like employees' individual performance or service. For example, if an employee received a pay rate increase due to a rise in the cost of living, this would be reflected in both the LCI's headline measure of wage cost inflation (adjusted LCI) and the unadjusted LCI. However, if an employee received a pay rate increase for quality reasons, such as receiving progression or a promotion, this would only be reflected in the unadjusted LCI and not the headline series.
- 39 While consumer inflation and unadjusted wage growth are not directly comparable measures, it is useful to compare the two as unadjusted wage growth presents a more complete picture of how wages for individuals are changing. Quarterly unadjusted wage growth across the public sector and most of the public sector sub-groups we monitor is higher than inflation this quarter.
- 39.1 Unadjusted wage growth for the March 2025 quarter was 0.9 percent (1.2 percent in the public sector, and 0.7 percent in the private sector) compared to quarterly inflation of 0.9 percent. Public Service unadjusted wage growth was 0.1 percent for the quarter. We note that quarterly unadjusted wage growth can be quite variable, as it can change significantly due to quality of work changes, including staffing changes including both the number of staff in an agency, and changes to the individuals performing the work.

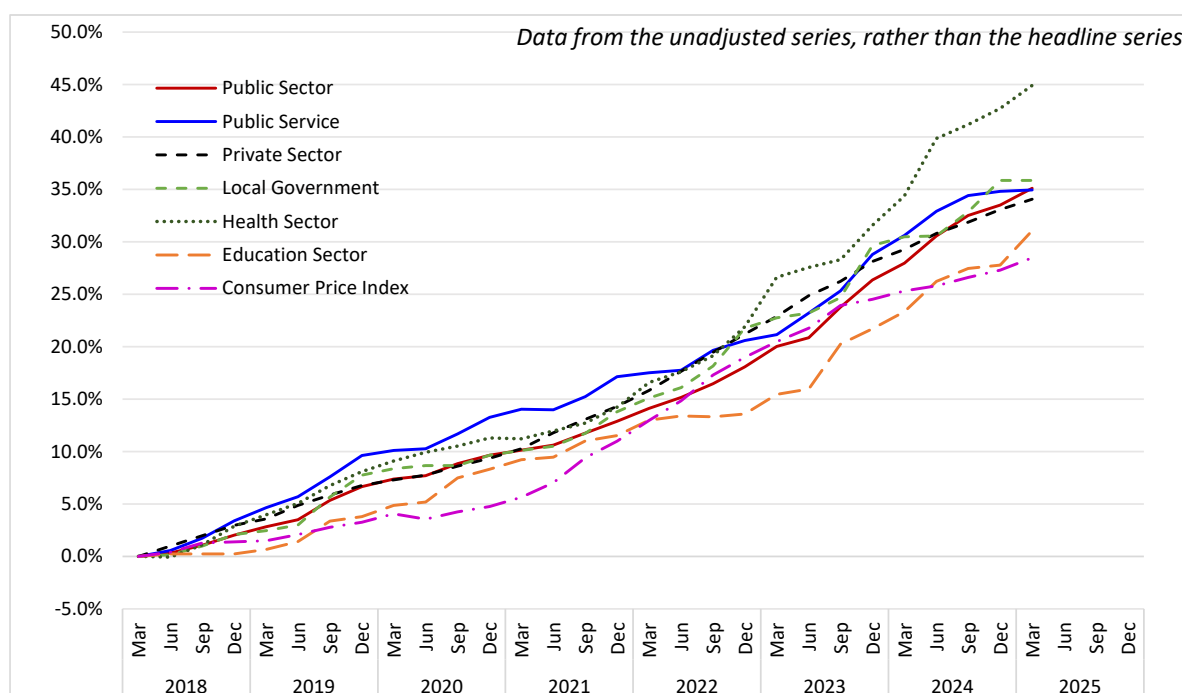
# Labour Cost Index Technical Report – March 2025



**Te Kawa Mataaho**  
Public Service Commission

- 39.2 Unadjusted wage growth for the year to March 2025 was 4.1 percent across all sectors (5.6 percent in the public sector, and 3.7 percent in the private sector) compared to annual inflation of 2.5 percent. In the Public Service annual unadjusted wage growth was 3.3 percent.
- 40 Figure 4 shows cumulative unadjusted wage growth for the public sector, private sector, and select public sector sub-groups against inflation since 2018. As this is measured over the same period results can be compared with cumulative wage growth shown in figure 2.
- 40.1 Over this period, cumulative inflation leads cumulative adjusted wage growth across all monitored sectors, except the health sector, but lags cumulative unadjusted wage growth across all sectors.
- 40.2 Relativities between adjusted and unadjusted wage growth across the sectors are different. For example, since 2018, cumulative adjusted wage growth in the Public Service is 18.5 percent lower than cumulative adjusted wage growth in the public sector overall, but cumulative unadjusted wage growth for the Public Service is almost the same (0.4 percent lower) as cumulative unadjusted wage growth in the public sector overall.

**Figure 4: Labour Cost Index – wage movements by sector and inflation (cumulative unadjusted percentage change since March 2018)**



- 41 Gaps between adjusted (figure 2) and unadjusted (figure 4) wage growth point at how wage growth is delivered in different sectors. A sector with a high gap between cumulative adjusted and unadjusted wage growth, such as the Public Service, delivers a larger amount of wage growth for “adjusted out” reasons, including progression and promotion, compared to sectors with a smaller gap, such as the health sector.
- 42 Cumulative unadjusted wage growth since 2018 is higher than adjusted wage growth across each sector we monitor, including leading by 8.9 percentage points in the public sector, 12.5



# Labour Cost Index Technical Report – March 2025



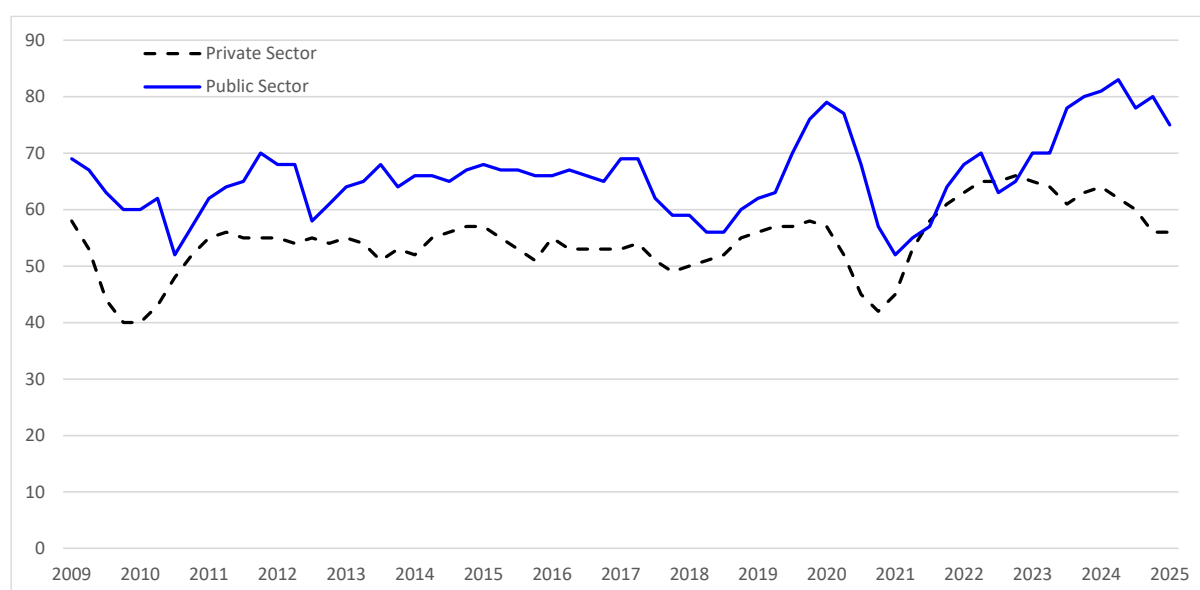
**Te Kawa Mataaho**  
Public Service Commission

percentage points in the private sector, and 13.6 percentage points in the Public Service. The smallest gap we see is in the health sector, where unadjusted wage growth leads adjusted wage growth by 6.0 percentage points.

## *Proportion of employees receiving wage increases*

- 43 The proportion of wages changing in any one quarter exhibits seasonality, much like average rates of wage growth. Generally, in the public sector, more wages change in the September and December quarters than in March or June. In the private sector more wages change in the June quarter than any other due to the influence of minimum wage changes, which usually change annually in April. As with rates of wage growth, this seasonality has, in recent quarters, been disrupted.
- 44 Figure 5 below shows the proportion of wages changing annually for the public and private sectors.

**Figure 5: proportion of wage rates changing for the public sector and private sector (annually), since March 2009**



- 45 The proportion of wages changing annually remains above the long-term trend in both public and private sectors. The proportion of wages changing in the quarter is slightly below the March average in the private sector, and slightly above the March average in the public sector.
- 45.1 Thirteen percent of all wage rates increased in the March 2025 quarter (down from 16 percent last quarter), and 59 percent of wage rates increased in the year to March 2025 (down from 60 percent for the year to December 2024).
- 45.2 In the public sector, 20 percent of wage rates increased this quarter (down from 21 percent last quarter) and 75 percent of public sector wage rates increased in the year to March 2025 (down from 80 percent in the year to December 2024).
- 45.3 In the private sector, 11 percent of wage rates increased this quarter (down from 15 percent last quarter), and 56 percent of wage rates increased in the year to March 2025 (unchanged from the year to December 2024).

# Labour Cost Index Technical Report – March 2025



**Te Kawa Mataaho**  
Public Service Commission

## Looking ahead to the June 2025 quarter

- 46 LCI data for the June 2025 quarter will be released on 6 August 2025, following a survey period of mid-May 2025.
- 47 Table 1 shows quarterly wage growth for the June 2024 quarter, and recent quarterly averages for all sectors combined, the public sector, and the Public Service.

**Table 1: Wage growth trends in a June quarter, select sectors**

Quarterly wage growth trends for a June quarter			
	June 2024	June Average 2021 - 2024	June Average 2009 - 2024
<b>All Sectors Combined</b>	4.3%	3.5%	2.3%
<b>Private Sector</b>	3.6%	3.4%	2.3%
<b>Public Sector</b>	6.9%	4.0%	2.4%
<b>Public Service</b>	5.4%	3.3%	2.1%

- 48 We anticipate low to average wage growth across the public sector in June 2025, and a continued reduction to annual wage growth. Significant annual changes may be seen in the June 2025 quarter, as wage growth from June 2024 no longer influences annual growth rates. The following quarterly wage growth from June 2024 will no longer be influencing annual growth rates when we report next quarter:
- 48.1 Across all sectors, quarterly wage growth was 1.2 percent, second highest result on record.
- 48.2 Public sector quarterly wage growth was 1.8 percent, third highest result on record.
- 48.3 Public Service quarterly wage growth was 1.3 percent.
- 48.4 Health sector quarterly wage growth was 3.6 percent, the second highest quarterly result for the sector.
- 48.5 Education sector quarterly wage growth was 2.1 percent.
- 49 You can find our full report on June 2024 quarterly wage growth on the Commission's Employment Relations [website](#).

Please direct any enquiries to [EmploymentRelations@publicservice.govt.nz](mailto:EmploymentRelations@publicservice.govt.nz)

Date: 22 May 2025

## Key points

- 1 The Labour Cost Index is reported quarterly by Statistics New Zealand. The Public Service Commission prepares analysis on wage growth across the Public Service using this data. Headline data is shown in table 1, and figure 1, below. This summary document provides headline data on the latest quarter's results. Further detail can be found on the Public Service Commission website [here](#).
- 2 Quarterly wage growth is moderate this quarter (refer table 1), after a prolonged period of above-average wage growth throughout 2023 and 2024 attributable to implementation of the Public Sector Pay Adjustment (the Pay Adjustment)<sup>1</sup>. An uptick in public sector wage growth this quarter is attributable to significant quarterly wage growth in the education sector.
  - 2.1 Public sector wages grew 0.9 percent in the March 2025 quarter, compared to the 0.4 percent growth in the private sector for the same period.
  - 2.2 Public Service (departments and departmental agencies) wages were flat in the March quarter. This is only the sixth time the Public Service has recorded nil quarterly wage growth since 2001.
  - 2.3 Education sector wage growth, 2.4 percent in the March quarter, is a high outlier this quarter, is the primary driver of public sector wage growth this quarter, and is the third highest single quarter growth we've seen for the education sector.
- 3 Annual wage growth remains above average across the sector due to wage increases delivered through the first half of 2024 (refer figure 1). However, it is slowing as high wage growth in the March 2024 quarter (this time last year) no longer affects the index.
  - 3.1 Public sector wages grew 4.2 percent in the year to March 2025, compared 4.5 percent annual wage growth reported last quarter, and a record high 6.9 percent reported for the year to June 2024.
  - 3.2 Private sector wage growth was 2.6 percent in the year to March 2025. Private sector annual wage growth has fallen steadily from a peak of 4.5 percent in the year to March 2023.
  - 3.3 Health sector wage growth continues to fall, but remains high at 5.2 percent in the year to March 2025.
  - 3.4 Except for the Public Service, annual wage growth across all monitored sectors exceeds inflation in the year to March 2025.
- 4 Twenty percent of public sector employees received a pay increase in the March quarter, and 75 percent received (at least one) pay increase in the year to March 2025. This compares to the private sector where 11 percent of employees received a pay increase this quarter, and 56 percent received a pay increase in the year to March 2025.

---

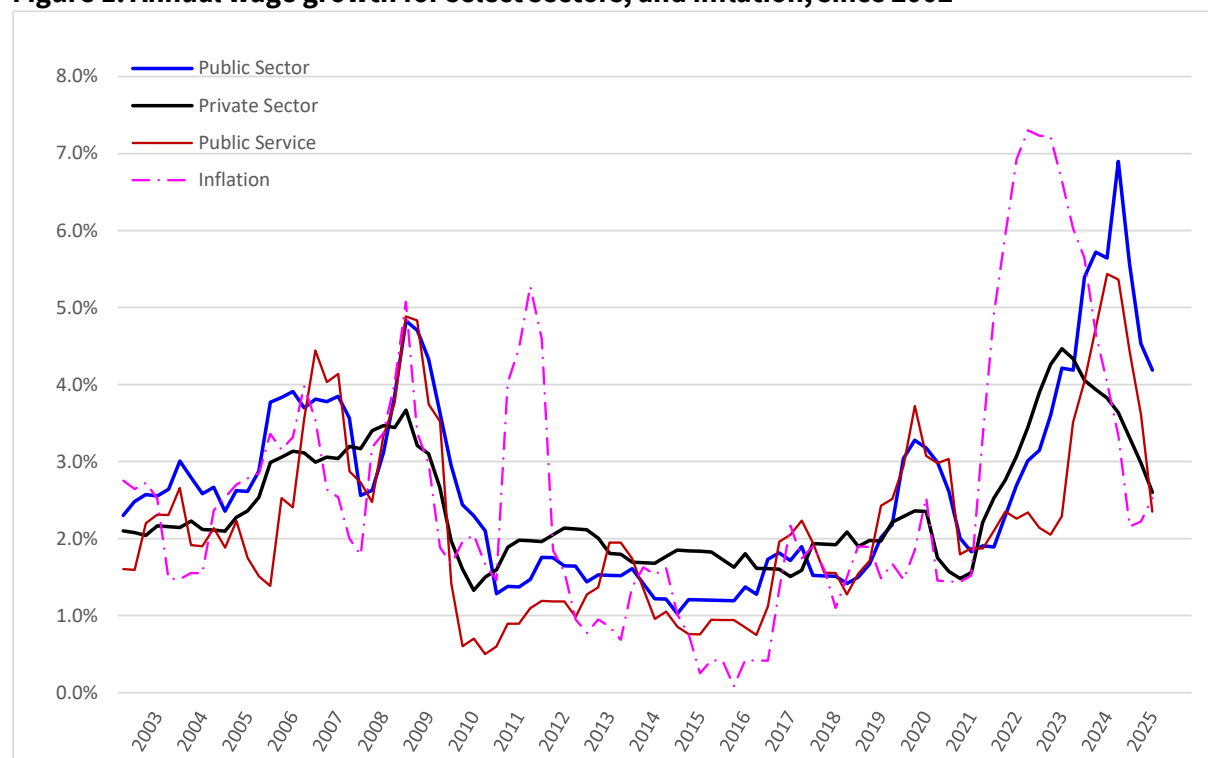
<sup>1</sup> The Pay Adjustment provided for a wage increase of \$4000 in year one (from December 2022 or April 2023), and the higher of \$2000 or three percent wage increase in year two (from December 2023 or April 2024).

## Data and annual wage growth trend

**Table 1: Quarterly, annual, and cumulative wage growth for select sectors, and inflation**

Labour Cost Index results for the March 2025 quarter			Cumulative wage growth since:	
	Quarterly	Annual	March 2018	June 2001
<b>All Sectors Combined</b>	0.5%	2.9%	22.4%	76.9%
<b>Private Sector</b>	0.4%	2.6%	21.6%	75.2%
<b>Public Sector</b>	0.9%	4.2%	26.2%	85.0%
<b>Public Service</b>	0.0%	2.4%	21.4%	66.5%
<b>Health Sector</b>	0.4%	5.2%	38.9%	110.6%
<b>Education Sector</b>	2.4%	5.1%	24.8%	88.7%
<b>Other Central Govt.</b>	0.4%	4.2%	21.6%	67.2%
<b>Local Govt.</b>	0.1%	3.2%	23.5%	84.0%
<b>Inflation</b>	0.9%	2.5%	28.5%	81.8%

**Figure 1: Annual wage growth for select sectors, and inflation, since 2002**



Please direct any enquiries to [EmploymentRelations@publicservice.govt.nz](mailto:EmploymentRelations@publicservice.govt.nz)

Date: 22 May 2025